



"Critical programs provided by The Frederick Center allow LGBTQ+ individuals of all ages to feel safe, welcome, and affirmed. This community effort cannot be accomplished without each of us pitching in."

— Kristopher Fair, (he/him pronouns)

Get Involved!

- ☐ Put me on your free mailing list!
- ☐ I want to get involved
- ☐ Annual Membership
 - ☐ Student/Youth \$10 (age 23 or younger)
 - ☐ Individual Adult \$20
 - ☐ Household \$35
 - ☐ Supporter \$50

☐ I want to make an additional donation \$ _____

Your membership is tax-deductible.

Name/s _____

Address _____

City _____

State _____ Zip _____

Email _____

Phone _____

Make an Impact!

= Be Visible!

Stand up against bullying, sexual orientation biases, gender binary and non-inclusive language.

= Join a Committee!

Your contributions of time and talents help The Frederick Center expand programming to meet the needs of our community.

= Volunteer for a Day!

= Attend Our Events!

= Become a Member/Donate!



The Frederick Center

Embracing
Our LGBTQ+
Community



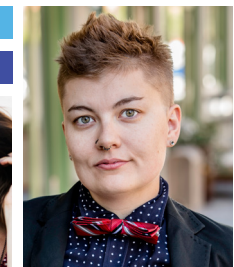
TheFrederickCenter.org
TFC@thefrederickcenter.org

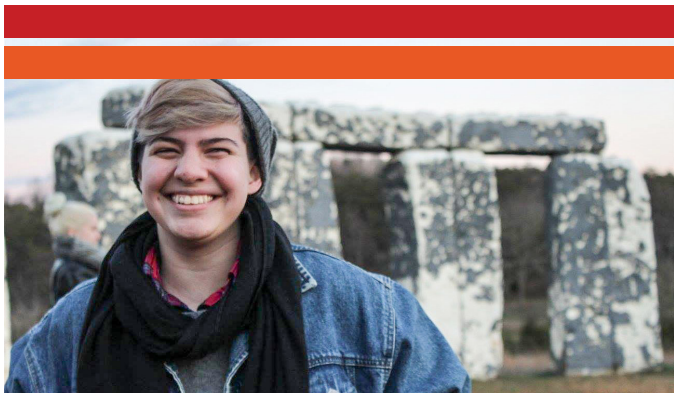
facebook.com/TheFrederickCenter
facebook.com/TheFrederickCenterYouth

PO Box 3231, Frederick, MD 21705-3231

The Frederick Center

Embracing
Our LGBTQ+
Community





"I have met people that have become friends as we volunteer together to make Central Maryland a more welcoming community."

— Em Perper (they/them pronouns)

About Us

We are a 501(c)3 non-profit organization dedicated to supporting, connecting, and educating the Lesbian, Gay, Bisexual, Transgender, Non-binary, and Queer (LGBTQ+) community and its allies in Central Maryland.

A student experiencing extreme bullying because of his sexual orientation, his mother, and other adults came together to build a welcoming community for LGBTQ+ teens and adults in 2012

The Frederick Center proudly partners with private, governmental, non-governmental, non-profit, educational, and religious organizations, including:

- = Campus Area Response Education (CARE)
- = School Health Council
- = Frederick County Homelessness Coalition
- = Child Fatality Review Task Force
- = Health Equity Task Force
- = Frederick Co. Public Schools LGBTQ+ Student Support Task Force
- = United Way
- = Maryland LGBTQ Chamber of Commerce
- = Frederick Chamber of Commerce
- = Downtown Frederick Partnership
- = City of Frederick Police Chief's Forum
- = Downtown Safety, Development and Services Committee

The Frederick Center proudly partners with over fifty governmental, non-governmental, non-profit, educational, and religious organizations.



Support Services

Youth Group Junior

First and third Wednesday afternoon peer group for LGBTQ+ youth ages 9-13 and their parent/s and caregiver/s. A place for LGBTQ+ tweens and their parents/caregivers to make friends, learn about themselves and others, share interests and skills, and discuss common issues.

Weekly Youth Group

Wednesday evening peer group for LGBTQ+ youth ages 13-23. Topic-driven meetings: education, support, friendship building, skill-sharing, mentoring. Meetings often include a licensed group facilitator.

Young Adult Group

Tuesday evening peer group for LGBTQ+ adults age 18-26. Topic driven, facilitated meetings structured by participants.

Healing Pride

Group for LGBTQ+ survivors of sexual assault, sexual abuse, and intimate partner violence. Facilitated by licensed clinicians from Heartly House.

Trans and Gender Non-binary Community Group

Safe space for transgender and gender expansive peer adults 18+ to network and discuss topics of interest, including identity, coming out, transitioning, and gender.

TransFamily

Support group for parents and other caregivers of transgender and gender expansive children. Led by a licensed facilitator.

Bisexual Social Networking Group

Meets monthly to provide social / discussion opportunities for the Bi+ community. Events are announced through Meetup.

Community Services

Frederick Pride

Annual festival in June celebrating LGBTQ+ Pride with music. Entertainment, vendors, and speakers. Draws thousands of community members, allies, friends, and neighbors. The celebration includes a range of related Pride events during the month.

LGBTQ+ 101

Sensitivity and awareness training for organizations, tailored to address specific needs. While a donation is encouraged, trainings are pro-bono.

Welcoming Frederick

Conference for medical, educational, social work and other professionals on how to create affirming spaces for LGBTQ+ people. (Continuing education credits offered)

Frederick HIV Coalition

Supports HIV testing at community outreach events and distributes free home HIV test kits without cost to community members; provides education and awareness about HIV prevention and treatment.

Community Outreach

- = In the Street
- = National Night Out
- = Community Health Fair
- = Local festivals, block parties, and allied events

Annual Events

- = World AIDS Day
- = Transgender Day of Remembrance
- = Carnival
- = Little Song, Little Dance

